



== GET ==
TOGETHER
.over.
DRINKS

If you have an allergy or intolerance, please speak to a member of our team before you order your drinks.
For full allergen information please speak to a member of the team.
Adults need around 2000 kcal a day.

BEERS BOTTLES & BEYOND

OUR BEERS & ALES

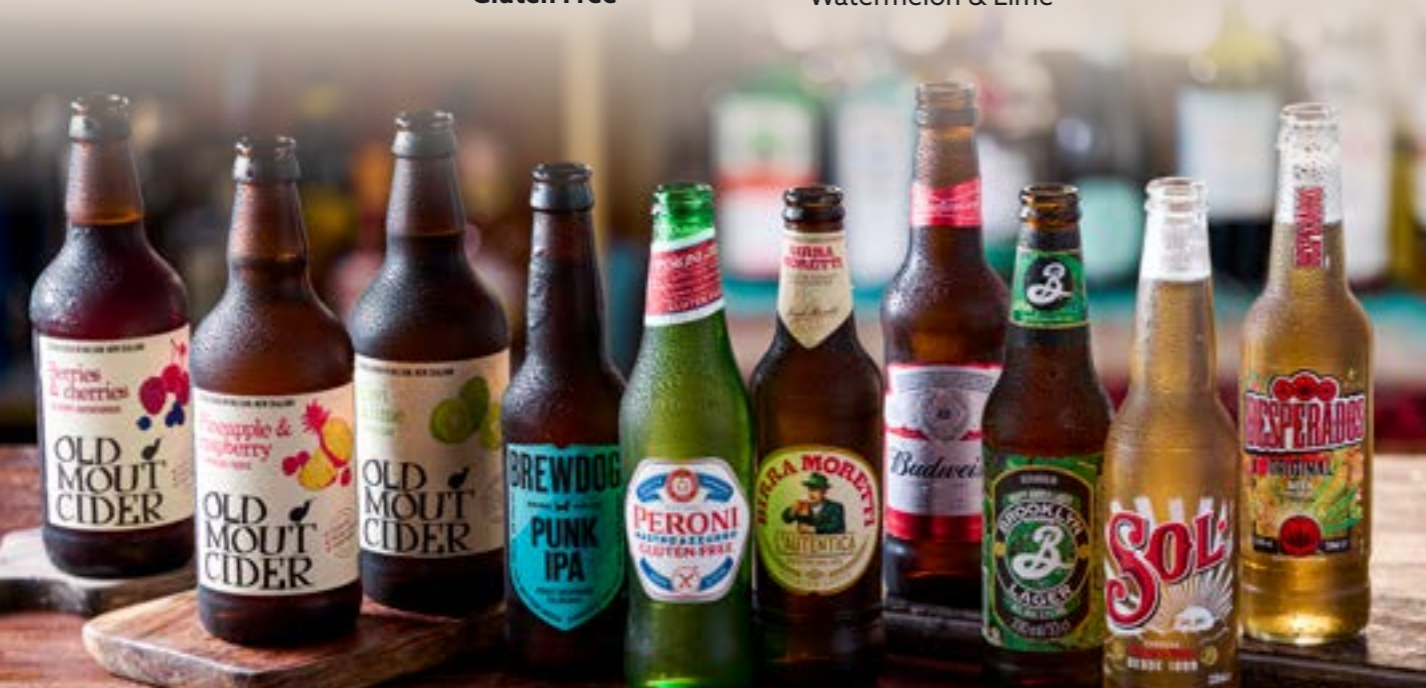
Brooklyn Lager
BrewDog Punk IPA
Desperados Beer
Budweiser
Sol
Peroni Nastro Azzurro
Gluten Free

CIDERS

Bulmers Original
Old Mout Cider,
Choose from:
Strawberry & Apple
Berries & Cherries
Kiwi & Lime
Pineapple & Raspberry
Watermelon & Lime

OTHER FAVOURITES

WKD Blue
Smirnoff Ice



ANYONE FOR A SHOT!

CAZCABEL COFFEE TEQUILA
CAZCABEL HONEY TEQUILA
TEQUILA ROSE
LUXARDO SAMBUCA
JÄGERMEISTER
JÄGERMEISTER COLD BREW
FIREBALL
SHEEPDOG PEANUT BUTTER WHISKEY

MIX IT UP *with a* COCKTAIL

Available as pitcher

COLADA SPRITZ £6.50

Holiday in a glass, London Essence Roasted Pineapple Soda fused with Bacardi Coconut rum and served with fresh orange.

WOO WOO £6.00

The fruity & refreshing favourite, cranberry juice laced with Smirnoff No. 21 Vodka & Archers Peach Schnapps.

LONG ISLAND ICED TEA £6.25

A bright and refreshing mix of Bacardi Rum, Gordon's Gin, Smirnoff No. 21 Vodka & Olmeca Silver Tequila with fresh lime and a splash of Pepsi Max.

PURPLE RAIN £6.00

Fit for a Prince! Au Blue Raspberry Vodka mixed with R.White's lemonade and a drizzle of grenadine syrup.

ON THE BEACH £6.00

A favourite that needs no introduction, Smirnoff No. 21 Vodka & Archers Peach Schnapps mixed with orange and cranberry juice.



Let the FUN BE-GIN

Served as a 50ml measure with mixer

CLASSIC DRY GIN

BOMBAY SAPPHIRE

The world famous gin in its distinctive blue bottle. Every drop contains 10 hand-selected botanicals from exotic locations around the world. *Perfectly paired with Fever-Tree Indian Tonic Water, served with fresh lime.*

TANQUERAY

Made from four classic gin botanicals, Tanqueray London Dry Gin's timeless recipe remains unchanged since 1830. *Perfectly paired with Fever-Tree Indian Tonic Water, served with fresh grapefruit.*

THE BOTANIST

Smooth and botanical gin created from 22 hand foraged botanicals from the remote Scottish Island of Islay. *Paired with Fever-Tree Elderflower Tonic Water, served with fresh grapefruit.*

HENDRICK'S GIN

Created from eleven fine botanicals, the curious, yet marvelous, infusions of rose & cucumber contribute to its uniquely balanced flavour resulting in an impeccably smooth distinct gin. *Paired with Fever-Tree Light Indian Tonic Water, served with fresh cucumber.*

HENDRICK'S CABINET OF CURIOSITIES

At the heart of the Hendrick's gin palace lies the Cabinet of curiosities, the home of very special experiments and elixirs rarely released to the World.

HENDRICK'S LUNAR

A delightfully smooth and alluring gin that is rich with night blooming floral essence, offering a delicate balance of warm baked spices, and finished with a crisp burst of citrus. *Paired with Fever-Tree Ginger Ale and served with fresh cucumber.*

HENDRICK'S NEPTUNIA

Unmistakably Hendrick's but with an invigorating blend of locally sourced coastal botanicals, smooth citrus finish, and a hint of the distant sea breeze. *Paired with Fever-Tree Elderflower Tonic Water and served with fresh lime.*

THE FLAVOURS

RHUBARB - WARNER'S RHUBARB

Every bottle is one-third rhubarb juice, packed with delicious, real rhubarb flavour. *Perfectly paired with Fever-Tree Ginger Ale and served with fresh orange.*

RASPBERRY - WARNER'S RASPBERRY

Full of flavour packed with raspberries and blackberries. *Perfectly paired with Fever-Tree Mediterranean Tonic Water and served with raspberries and a sprig of mint.*

STRAWBERRY - GORDON'S PINK GIN

Refreshing taste with natural sweetness of raspberries and strawberries. *Perfectly paired with R. White's Lemonade and served with strawberries.*

BLOOD ORANGE - MALFY GIN CON ARANCIA

Distilled in Italy using the peel of Sicilian Blood Oranges, Italian juniper and four other botanicals. *Perfectly paired with Fever-Tree Mediterranean Tonic Water and served with fresh grapefruit.*

PEACH & ELDERFLOWER - PUERTO DE INDIAS PEACH

This gin combines the fruity, floral deliciousness of peach, elderflower and orange. *Perfectly paired with Fever-Tree Elderflower Tonic Water and served with fresh orange.*

MANGO & LIME - WHITLEY NEILL MANGO & LIME

A scrumptiously summery, limited-edition gin. Inspired by the flavours of Sri Lanka. *Perfectly paired with Fever-Tree Elderflower Tonic Water.*

RASPBERRY & SWEET BASIL - BOË GIN

Boë's award winning gin is carefully blended producing bold, beautiful flavours of raspberries and a gentle hint of sweet basil. *Perfectly paired with R. White's Lemonade and served with fresh raspberries.*

The perfect alcohol-free alternative to your usual G&T.

GORDON'S 0.0%

Made using only the finest distilled botanicals, Gordon's 0.0% provides the bold, juniper led character you'd expect from Gordon's Gin. *Paired with Fever-Tree Indian Tonic Water and fresh lime. (63 kcal)*

LOW & NO

HEINEKEN 0.0%

A refreshing non-alcoholic lager, brewed with a unique recipe for a distinct balanced taste, which now allows you to enjoy a Heineken® beer at any time of day. (70 kcal)

BECK'S BLUE

Beck's Blue is a light, crisp and refreshing alternative with no compromise on taste. (39 kcal)

OLD MOUT BERRIES & CHERRIES 0.0%

A special blend of strawberry and raspberry with notes of blueberry. Finished off with a refreshing burst of juicy apple. (184 kcal)

SHIPYARD LOW TIDE PALE ALE

A juicy, tropical Pale Ale, with a fullness that belies it's low alcohol. (65 kcal)

GORDON'S 0.0%

Made using only the finest distilled botanicals, Gordon's 0.0% provides the bold, juniper led character you'd expect from Gordon's Gin, paired with Fever-Tree Indian Tonic Water and fresh lime. (63 kcal)

Adults need around 2000 kcal a day.



Adults need around 2000 kcal a day.

HOUSE SODAS



A uniquely crafted range of sodas created using Mathieu Teisseire Syrups, which are made with real fruit and naturally filtered water from the French Alps.

STRAWBERRY & PEACH SODA £3.25

Light bubbles bursting with the flavour of beautiful sun ripened strawberry and juicy sweet peach. (176 kcal)

PASSION FRUIT SODA £3.25

A refreshing tropical soda with exotic notes of sweet and tart passionfruit at the finish. (92 kcal)



LONDON ESSENCE WHITE PEACH & JASMINE CRAFTED SODA

A blend of white peach and fragrant jasmine, complete with fine champagne-style bubbles. (39 kcal)

LONDON ESSENCE ROASTED PINEAPPLE CRAFTED SODA

A sweet and sparkling soda with a delicious tropical flavour. (41 kcal)

J2O SPRITZ APPLE & ELDEFLOWER

Crisp apples and a hint of elderflower go perfectly with delicate bubbles. (50 kcal)

J2O SPRITZ APPLE & WATERMELON

A refreshing blend of apple, watermelon and a dash of bubbles. (55 kcal)

FROBISHERS APPLE JUICE (110 kcal)

J2O FRUIT BLENDS

Will leave your taste buds tingling and your tongue wondering what just happened. Choose from:

ORANGE & PASSION FRUIT (65 kcal),

APPLE & RASPBERRY (61 kcal) or **APPLE & MANGO** (58 kcal)



SOFTLY, SOFTLY

REFRESH YOURSELF



FRUIT SHOOTS



FRUIT SHOOT JUICED

50% water 50% juice from concentrate
Made with real fruit. No added Sugar.

CHOOSE FROM:

**APPLE AND PEAR (48 kcal) OR
STRAWBERRY AND RASPBERRY (54 kcal)**

FRUIT SHOOT

Made with real fruit. No added Sugar.

CHOOSE FROM:

**APPLE AND BLACKCURRANT (14 kcal),
ORANGE (14 kcal), OR
SUMMER FRUITS (11 kcal)**

SOFT FAVOURITES

RED BULL SUGAR FREE CAN (113 kcal)

VIMTO 330ML CAN (67 kcal)

TANGO 330ML CAN (19 kcal)

IRN-BRU CAN (67 kcal)

HOT DRINKS

ASK A TEAM MEMBER FOR
OUR FULL SELECTION OF
HOT DRINKS AVAILABLE



Products shown are subject to availability. Prices include VAT at the current rate. Alcohol may only be served to or purchased by persons aged 18 years or over & photographic identification may be required. Bar staff can refuse service at their sole discretion. It is never our intention to encourage excessive consumption of alcohol or to discriminate against any person; we encourage responsible drinking. Visit www.drinkaware.co.uk for the facts. Promoter: Marston's Pubs & Bars, a trading name of Marston's PLC, Marston's House, Brewery Road, Wolverhampton, WV1 4JT. Allergen note: Due to the way our drinks are prepared it is not possible to guarantee the absence of allergens & we do not make a "free from" claim & do not include "may contain" information. Our menu descriptions do not include all ingredients. ABV's may vary so please ask a member of staff if you would like to know the ABV of a particular wine. Single spirit = 25ml measure. Double up = 50ml measure. Pepsi Max, Tango or R. White's lemonade mixer = 4oz dash. Please ask a member of staff for more information. Adults need around 2000 kcal a day.

	ABV	9%	10%	11%	12%	13%	14%
BOTTLE	750ml	6.8	7.5	8.3	9	9.8	10.5
LARGE GLASS	250ml	2.3	2.5	2.8	3	3.3	3.5
MEDIUM GLASS	175ml	1.6	1.7	1.9	2.1	2.3	2.4
SMALL GLASS	125ml	1.1	1.3	1.4	1.5	1.6	1.8

Please ask a member of staff if you would like to know the ABV of a particular wine. The table to the left will enable you to calculate the alcohol units in your drink.

TELL US HOW WE DID!

Tell us how we did today and you could win
£250 of LOVE2SHOP vouchers.
Visit www.helpraisethebar.co.uk

For full terms and conditions please visit
www.helpraisethebar.co.uk. No purchase
necessary. Participants must be 18 or over.